

# SCOTTISH LANDSCAPE IN THE CRYENGINE 3

In just three months' time Environment Artist Martin Teichmann created an impressive Scottish landscape for the Polycount challenge, using the Free CryENGINE SDK. You can follow the design process in his detailed Making-of, from concept phase to the final composition.



**Martin Teichmann**  
is an Environment Artist at  
Rocksteady Studios.

In 2008 Martin finished his studies in Computer Science in Erfurt, Germany. In this time he already worked as a 3D Artist on the action-roleplaying game *Venetica* by Deck13. In 2010 he was hired by Crytek to work on *Crysis 2* and *Crysis 3*, since 2013 he lives in London and works as an Environment Artist at Rocksteady Studios, the developers behind *Batman: Arkham Asylum* and *Arkham City*.

[www.martinteichmann.com](http://www.martinteichmann.com)  
[mail@martinteichmann.com](mailto:mail@martinteichmann.com)

**T**he main idea for this scene comes from a photo of a lonely, desolate Scottish landscape I saw a few years ago. For quite a while I had this Scottish scene in my mind and the idea to recreate such a scene as a real-time game environment. When I saw the Polycount community was starting the »The Escape« challenge, I knew I wanted to build this scene.

The Polycount challenge was to create either an escape scene, a character or both. There was no restriction in the type of setting or technical limitations such as poly count or texture resolution. It only had to run in real-time in a game engine. The challenge was to run for three months which sounded like the perfect amount of time for me to be able to finish my plans for the environment. I used the Free CryENGINE SDK as it is a powerful tool especially to render large landscapes and vegetation in high quality (Figure 1).

## The Beginning

I started my work by looking for reference images. This was important for me to get a better idea of what I wanted to create in detail. It also helped me to figure out what elements I needed for my scene to achieve the most interesting and detailed result in the given time. At the end of my research I had around 400 images in my reference folder for all different kinds of elements and ideas.

As I searched for reference material my general ideas got much more defined. Relatively quickly I decided to add the road to the horizon as one of the key elements in the scene. This would show »The Escape« in my work, as it was central to the Polycount challenge. At this point I wanted the landscape itself as a whole to be the focus for the viewer. They should look at the image and should be guided to the horizon, the destination for the escape. This would match the challenge rules and make the image interesting and more meaningful. I didn't

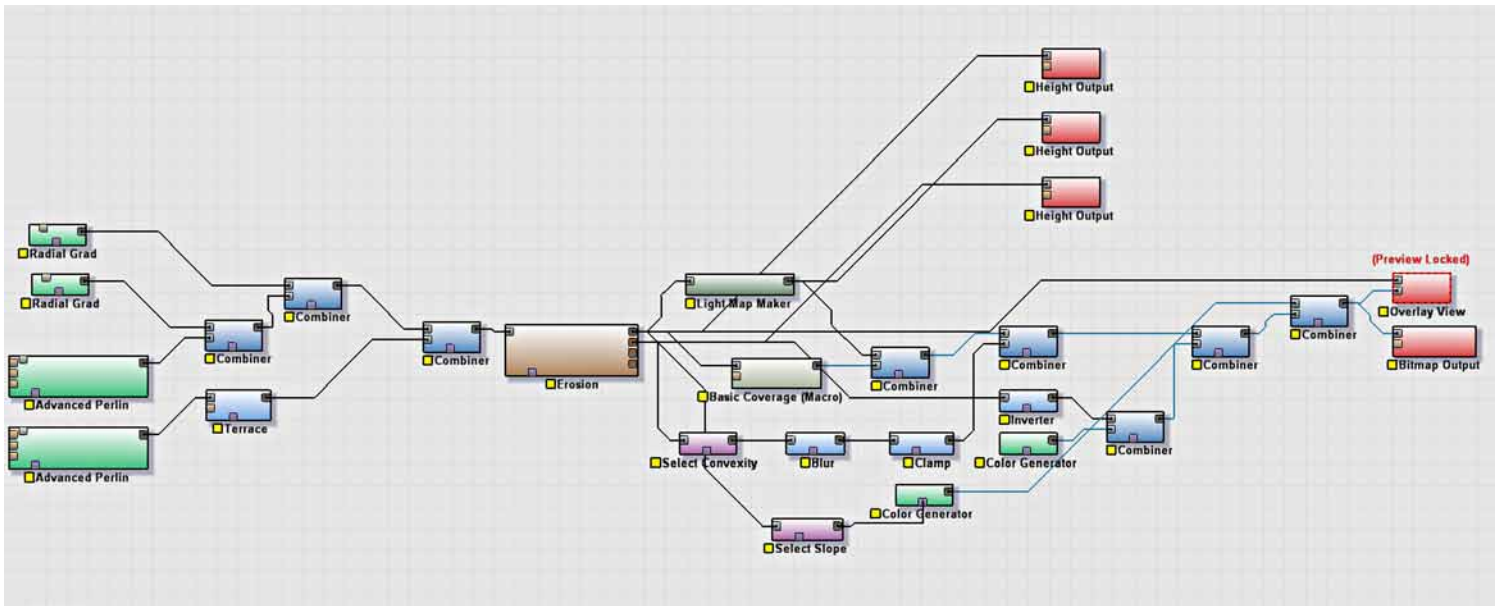


Figure 2 Final node graph I created in World Machine. The brown node in the middle is the »Erosion« node which generates the realistic, weathered look of the terrain.

want to tell a story that was too obviously to the viewer, he should think to himself about what had happened here. I decided to add several »evacuation« props to the scene and abandoned luggage onto the street to make it clear that people passed this area to escape a disaster. What this disaster was or where all the people had gone to was something I wanted the viewer to think about.

With all those ideas in mind I finally started working on the first and most important part: the terrain.

### Terrain creation in »World Machine«

It is a complex and time consuming task to paint a realistic looking terrain to fulfill all requirements I had in mind. Areas for streets or buildings needed to be considered and later the terrain adjusted to this. However, to paint a terrain can easily lead to building unrealistic shapes or proportions in the environment.

I decided to create my scene the other way around. My idea was to first create a realistic landscape and pick an interesting spot to use for the final scene afterwards. This meant that the road had to follow the existing landscape shapes instead of creating the terrain around the road. With this approach I gave away some freedom and control but on the other hand I found the results to be way more realistic and believable.

A landscape consists of a large number of different organic shapes. The different materials present such as hard or soft rocks behave differently to the weather and the erosion. They so form a unique look of the terrain. Water flows down, forms valleys and erodes the lighter parts such as dirt and soil.

To achieve this realistic, weathered look, I picked the terrain generator tool »World Machine 2.0« from Stephen Schmitt ([www.](http://www.world-machine.com)



Figure 3 Base terrain rendered in World Machine.

[world-machine.com](http://www.world-machine.com)). This tool contains very powerful erosion tools to mimic the behavior of weathered terrains.

World Machine is a node based program which makes it easy and efficient to play around with all kinds of different looking terrains. The »Erosion« node adds the weathering effect on top of a terrain. At first I generated a terrain roughly fitting my ideas and finally added the erosion effect to give the terrain the realistic look (Figure 2). I also used the terrain texture from World Machine which was very useful as a base color when I applied textures and materials later in the CryENGINE (Figure 3).

After the terrain was imported into CryENGINE I got a nice source of inspiration and started looking for interesting spots on the terrain (Figure 4). I jumped into the game mode several times and walked through the landscape, to get the best feeling for how it would work from the viewer's perspective and which

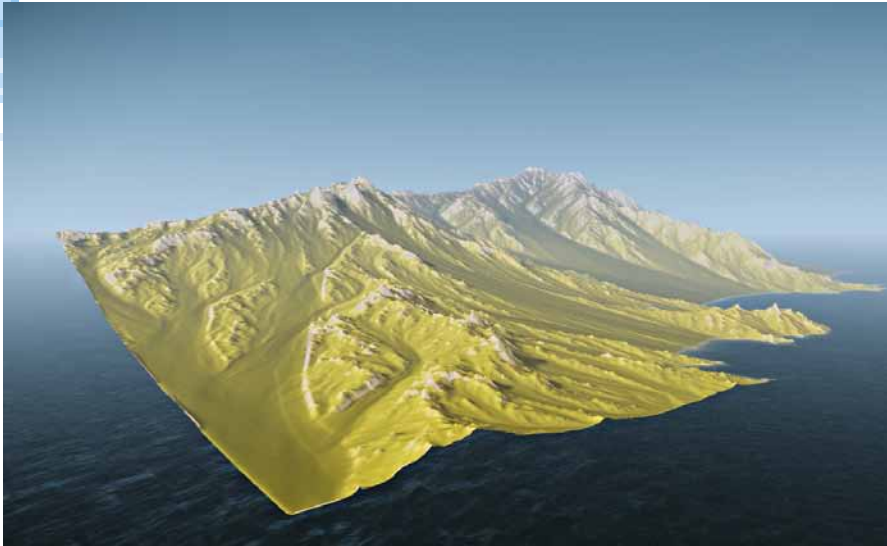


Figure 4 World Machine terrain imported into CryENGINE. I used a 16 bit heightmap as a »pgm« and the terrain color texture as a 8 bit »bmp« file.

areas were best to start working with (The Free CryENGINE SDK also provides several already functional vehicles to drive through the environment which is a great fun!).

### Terrain textures

After I imported the terrain into CryENGINE some close up details for the different materials on the landscape like rocks, mud or grass were needed to embellish the scene. At first the terrain was covered with a gray »checker« texture.

The terrain material textures work more or less like detail textures. They get blended together with the color of the terrain and should contain as less color information as possible. The detail texture fades out in the distance to improve performance. Only the terrain color is then visible on the terrain. To avoid a bad transition between the close areas use the detail textures and the areas far in the background, the textures shouldn't contain too much color or light information. I desaturated and reworked my diffuse textures to get a relatively even and good tiling pattern for the terrain (Figure 5).

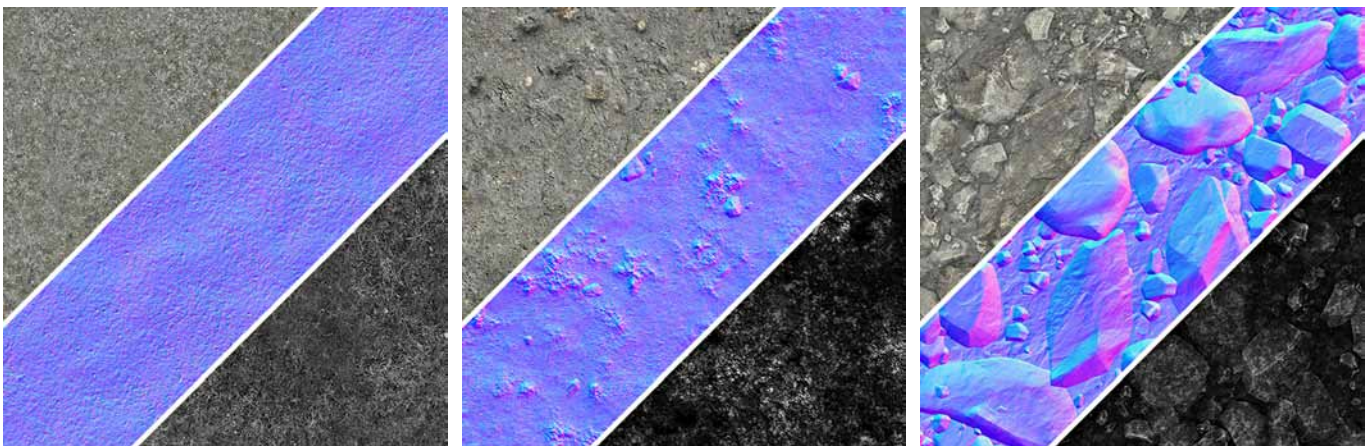


Figure 5 Terrain textures diffuse map, normal map and specular map. Left to right: grass, dirt, small stones. Note the strong contrast in the specular maps for nice detailed highlights and slightly wet look of the materials.

In order to add interesting detail and structure while also saving texture memory and time, I used the same textures with different material setups in the CryENGINE.

For the grass texture I created a material with strong normal map details, and another material without. In order to have more variation and less repetitive pattern effects on the terrain I switched between those two materials while painting the grass to the terrain.

I made three different materials for the rocks; one for large scale distant rocks, one mid-distance material for the average sized rocks and finally a much smaller scaled version for close up details. For the distant rock material I also used a non-uniform scaling to get more direction into the material and onto the terrain. Using these three rock materials in a clever way, it is possible to achieve organic rock surfaces while just using one single texture (Figure 6).

### Road

Another important part for my scene is the road. Before I started working on smaller elements like plants, rocks, buildings etc. I needed a base road as it was fundamental for the look and composition of my scene. Firstly I picked an area on the terrain where I found the details of the landscape came out very nicely. Then I needed to adjust my terrain at this point to create a valley for the road into the terrain. For this I used the terrain tools of the CryENGINE to raise and lower parts until I was satisfied with the rough shapes.

Looking at some of my reference photos I noticed that the roads do not usually take the shortest route, but the easiest path. These roads historically developed from small shepherd pathways into actual streets while still keeping the old and natural shape. This makes them fit so well into the landscape.

The CryENGINE provides a handy road tool that I used to create the street. This tool simply generates a »spline« path with just a few clicks directly on the terrain surface (Figure 7). I created a path following the given »natural« shapes of the generated landscape as much as



Figure 6 Terrain painted using varying scales of rock materials and normal-mapped material instances for the grass.

possible to mimic those typical organic streets. I had to raise or lower several parts of the terrain gently again to get a nice path for the road and to help the terrain to come out even a bit more naturally. When I was happy with the path for the street I used the »Align Height Map« function which adjusts the terrain to the generated road path and creates a very nice road fitted onto the terrain.

### Vegetation

The next step was to fill the landscape with vegetation for a nice level of detail. In the first step I worked on the grass patches which were the most important vegetation element as I wanted to use them everywhere. To achieve the best quality I created several high poly grass models and rendered the diffuse map, normal map and alpha map to a texture for the use on a simple plane object in the engine. The big benefit using high poly vegetation renders instead of a simple photo texture is the much cleaner alpha map and the rich and accurate normal map (Figure 8). To speed up placement of the vegetation I



Figure 7 Road tool in CryENGINE to generate the street as a simple spline. I used the given topology of the terrain to fit the road onto the terrain.

created various grass patches which contained several planes and grass textures. For more control in the finer detail of the vegetation I also exported a few different shaped single grass blades (Figure 9).



Figure 8 Rendered grass texture using high poly meshes I created in 3ds Max.





Figure 9 Several grass patches using the grass textures I rendered from high poly meshes.

### Props

The scene also needed some traffic signs and buildings to put more man made elements into the landscape. I think those elements really make the feeling of a lonely abandoned scene even stronger because although there are no humans shown in the images, some people were clearly living or passing through this area. What could have happened to them?

Aside from dropping in generic assets like different shaped rocks and stones, I created a number of props to help the human story telling in the scene. I added suitcases, shoes and medical boxes to put more items you usual wouldn't expect lying around on a street. Some barrier assets like the barbed wire and the tank trap were also made (Figure 10). For most of these objects I created a high poly mesh and baked the details into the low poly version I used in the CryENGINE. For some items, such as the shoes, I just created a low poly mesh as I was short on time. As these were further away from the camera, the lack of detail didn't matter as much.

The little bird is my favorite detail in this scene (Figure 11). Even though it's a very small element and only visible on the second or

third glance, it immediately adds vitality to the scene. It tells you that the people have gone, but that nature had reclaimed what humanity has abandoned.

### Composition

After combining the parts for my scene, I focused on the composition of the whole landscape. The road and its destination on the horizon already dictated the composition but there was still a lot of room for improvement. At this point it was very helpful that I got feedback from a number of sources. Firstly from the Polycount community where my work was reviewed in the forums and of course also from friends I showed my work to. It is very important to get an outside opinion, as other people will look at what you have created with a fresh eye. It's very easy to lose the overview of your work once you've been working on it for a while. A good tip I realize is to take a screenshot of the scene and flip it in Photoshop to get a new perspective on the image. Also a rough overpaint is a very efficient way to try out different elements and moods quickly instead of changing a lot of parameters in the engine again and again (Figure 12). I got a number of



Figure 10 Props I created to populate the scene. The medical box adds a bit of color to the scene.



Figure 11 The little bird was fun to model. It also adds some life and color to the scene.

very helpful points out of this which I then started to implement into the scene.

Once again I reminded myself that the main focus of the image was the road and its destination at the horizon. To reach this goal I used several elements to frame the image better. Trees and telegraph poles are used to frame the image while also adding silhouette detail. To lead the eye of the viewer to the horizon I expanded the »V« shape of the valley. For my second shot I put the little bird on top of a pole in the silhouette to show this specific element as a more important part of this scene.

I felt that the small details on the road should not attract the viewer's attention too strongly, while it should be visible at the second glance to give an idea that something had happened here. To achieve this I kept the colors of these items closer to that of the road itself. The exception is the red first-aid box that I wanted to stand out and add some »artificial« color to the scene just to increase the man-made aspects in this area.

### Lighting

A typical scene of a Scottish landscape would usually be misty or at least cloudy. I wanted to get close to this look but I also wanted to add a warm light to the scene. I felt that it should look a bit wet like after a rain and when the first warm light beams break through the clouds. This would help to increase the contrast of the story I was telling. There should be signs of »hope« visible in this depopulated and overcast scene.

I added a relatively strong and bright fog to achieve a misty look. This also helped a lot to separate the different layers of hills in the background of my scene and to give it additional depth.



Figure 12 Overpaint to improve the scene's composition. Top: original screenshot, bottom: overpaint in Photoshop.

The main light in the scene was obviously the sun. I set the sun color to a desaturated but bright yellow to get a slightly warm tint to the scene. A strong yellow light in the focal point of the image, the horizon, helped to emphasize



Figure 13 Left without, right with color grading enabled. More contrast and red tones added to the image.



Figure 14 Early state of the scene. The castle was cut later because it took away too much attention from the road and landscape. And those were the elements I wanted to bring into focus.

this section of the image and also helped me to get some nice rim lighting to pick out and separate the different elements and make them more visible. To achieve the final layer of quality I used color grading to adjust the image inside the CryENGINE. I added red tones and contrast in order to match the reference photos I had used more closely (Figure 13).

### Summary

As you can see, the final image is actually not very close to the first rough block out I created (Figure 14). In the beginning I had planned to include a lot more objects such as a stone wall, cars and a castle in the left of the background. I had included more and more ideas that I had in mind during my research. However, considering the time, I found that the more the idea and the scene matured in the planning and development process, the less unique elements were left in the scene. First of all, the time I had for the scene itself were only approximately three months and second of all I found that

having too many elements meant that they started to compete with each other for attention on the screen. So I stepped back a bit and removed one element after another until the right balance for this scene was found.

The creation of »The Escape« took a lot of hard work and effort to complete in the time allowed. On the other hand it pushed me to really work hard on the landscape to finalize it and to reach the goals I had in mind. I found that having a deadline helped me to keep things as simple as possible. The amount of stuff I learned while working on this scene was huge. Even though I was not one of the winning entries, I really enjoyed the competition and the hard work. At the end I am very happy with the final result (Figure 15). Now I am looking forward to the next challenge!

If you are interested, you can find all the final entries of the Polycount challenge under: [www.makinggames.de/polycount-finals](http://www.makinggames.de/polycount-finals)

Finally I have to say thank you to Dominikus Reiter, Martin Elsaesser and Ronan Mahon who helped me a lot with their feedback during my work on this scene and the making of this article.

Martin Teichmann



Figure 15 The final shot of the Scottish landscape scene.